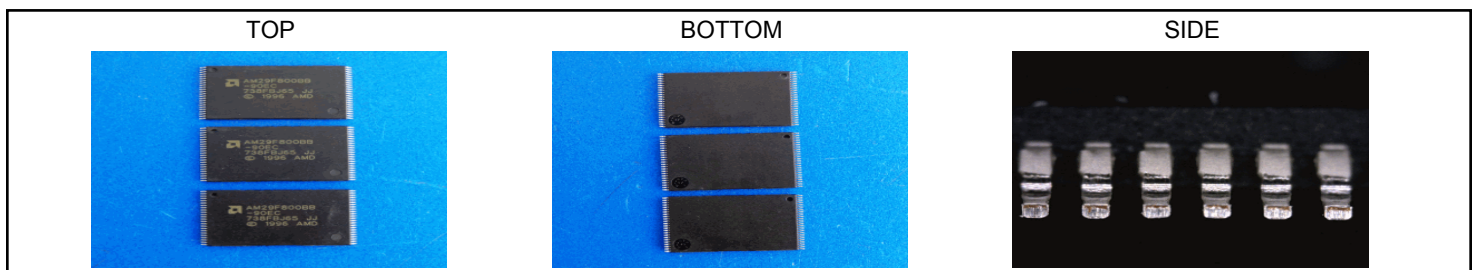


SAMPLE REPORT

Component Authenticity Verification Report

Customer	LINTECH CUSTOMER			Date	07/31/2015
Customer PO	123456789	Part Number	AM29F800BB-90EC	Inspected by	RE
Manufacturer	AMD	Date Code	9738	Reviewed by	FB
Quantity	10	Package Type	Tray	Report #	6981

Package Inspection Verification	Result	Comments
Are the physical dimensions correct per Mfg's data sheet?	Yes	
Are the Pin 1 indicators consistent?	Yes	
Is the seal between Body of Package in good condition?	N/A	
Are Pins/Leads/BGA's in good condition?	Yes	
Are Part body and edges in good condition?	Yes	
Part Markings and Identification	Result	Comments
Does the part list Country of Origin?	Yes	Malaysia
Are part markings consistent with Manufacturer's data sheet?	Yes	
Do Part markings match OCM structures?	Yes	
Are Datecodes consistent across all parts?	Yes	
Are font color and placement consistent across all parts?	Yes	
Blacktopping and Remarking Inspection	Result	Comments
If required, do parts pass marking test for remarking? (mineral spirits / alcohol)	Yes	
If required, do parts pass surface test for blacktopping? (acetone)	Yes	
If required, do parts pass scrape test?	Yes	
Additional Tests, Analysis or Services	Result	Comments
If required, have parts passed additional inspections?	N/A	

Notes:
Disclaimer:

The product referenced in this report have passed Lintech's CCP6081 inspection process and are considered to be original manufactured devices. Lintech performs analysis as a technical service to its customers and extends every effort to report reliable data and accurate interpretation. However, Lintech suggests that all material is 100% electrically tested to validate functionality and electrical characteristics, when and as applicable.